



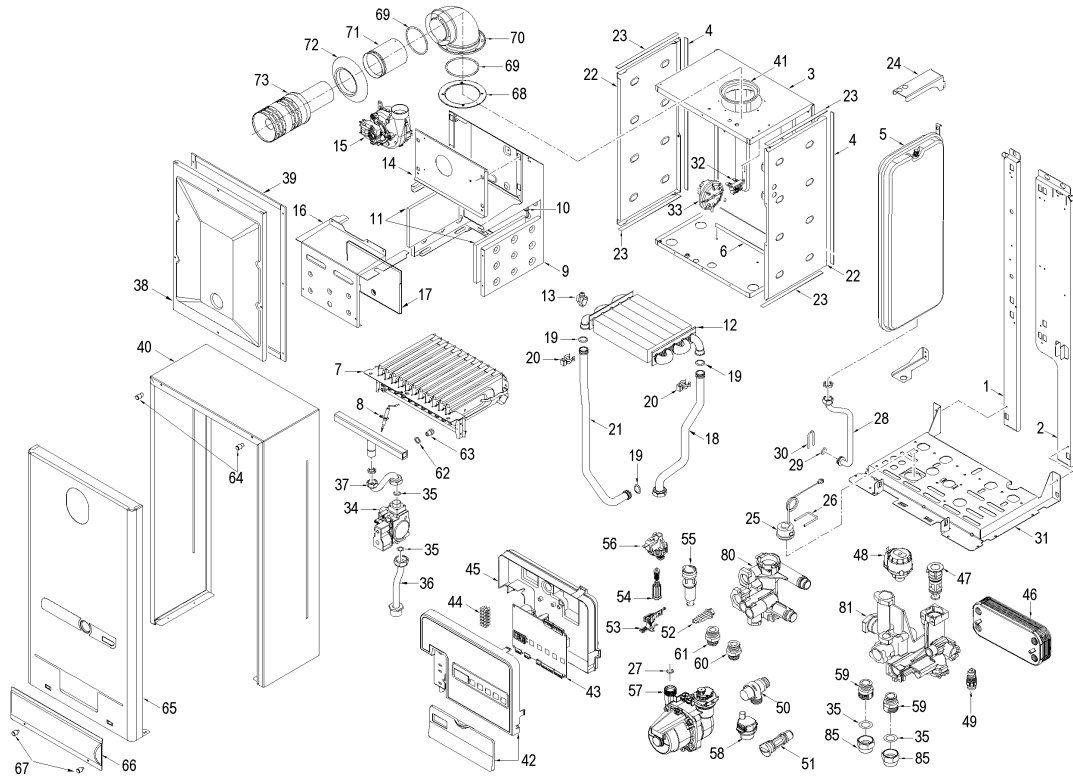
Fonderie Sime S.p.A. - Via Garbo, 27 - 37045 Legnago (VR) - www.sime.it
 Tribunale Verona 13531 - R.E.A. VR 171357 - C.C.P. 19423375 - N° Mecc. VR 014435
 Capitale Sociale Euro 5.521.200 int. versato - Codice Fiscale/Partita IVA n. IT 01275930236

Comfort Ambiente - Via Garbo, 27 - 37045 Legnago (VR)

Tel +39 0442 631111 - Fax Servizio Commerciale: Italia +39 0442 631291 - Estero +39 0442 631293

Fax Servizio Tecnico +39 0442 631292 - Fax Ufficio Acquisti +39 0442 631292 - Fax Amministrazione +39 0442 631336

8109293 CALD.MET. FORMAT DGT 30 E BF



Posiz.	Codice	Descrizione	
001	6318350	Left hand side frame part	
002	6318300	Right hand side frame part	
003	6317610	Sealed chamber rear panel	
004	6229838	Gasket for sealed chamber	
005	5183724	Rectang. expansion vessel 8 l.	FINO MATR.
005A	5183726	Rectang. expansion vessel 8 l.	DA MATR.
006	6257532	Air deflector	
007	5198263	Main burner assembly	MET
008	6235932	Ignition-ionisation electrode	
009	6318530	Smoke chamber assembly	
010	6318741	Combustion chamber rear insulat	
011	6318710	Combustion chamber side insulat	
012	6174265	Gas/Water heat exchanger	
013	6231362	NTC sensor	
014	6318610	Smoke chamber front panel	
015	6225636	Fan	
016	6317910	Combustion chamber front panel	
017	6318731	Combustion chamber side insulat	
018	6264846	C.H. return pipe	
019	6226412	O-ring 3068	
020	6226601	Spring for heat exchanger conne	
021	6264780	C.H. flow pipe	
022	6288210	Sealed chamber side panel	
023	6229837	Gasket for sealed chamber	
024	6267112	D.H.W. expans. vessel locking b	
025	6146111	Hydrometer	
026	6226628	Hydrometer Fixing spring	
027	6226457	O-ring 12bis diam. 16x1,90	
028	6017311	Flexible pipe L=250	FINO MATR.
028A	6227694	Pipe connecting expans. vessel	DA MATR.
029	6226464	O-ring 115 diam. 11,91x2,62	
030	6226627	Expansion vassel fixing spring	
031	6318010	Frame assembly lower side	
032	6229110	Smoke pressure switch bracket	

033	6225707	Air pressure switch	
034	6243833	Gas valve	
035	2030228	Gasket Ø 17x24x2	
036	6226884	Gas inlet pipe	
037	6226958	Pipe conn. gas valve to burner	
038	6317710	Sealed chamber front panel	
039	5192208	Gasket for sealed chamber	
040	6255891	Boiler casing	
041	6028620	Air diaphragm Ø 81	
042	6304791	Panel kit	
043	6301440	Main PCB	
044	2211010	Terminal strip	
045	6305050	Control panel cover	
046	6319690	kit 14 plate heat exchanger + o	
047	6319625	Diverting valve body	
048	6319620	Divertor valve motor	
049	6319603	Discharger cock	
050	6040211	Pressure relief valve 3 bar	
051	6319640	By-pass	
052	6319618	Primary filter component	
053	6319601	Sensor hall complete	
054	6319634	Filling cock	
055	6319633	Flowmeter without reg. of capac	
056	6037504	Water pressure switch	
057	6272316	Circulating pump	
058	6013182	Automatic air vent	
059	6120533	C.H Nipple	
060	6120532	D.H.W. Nipple	
061	6120534	D.H.W. Nipple exit	
062	6022004	Copper washer Ø 6	
063	6154417	Main burner nozzle NP 145 natur	MET
063A	6154416	Main burner nozzle ø 0,85	GPL
064	6133100	Pin M5 ZnCr	
065	6255881	Casing door	
066	6255902	Flap door	
067	6242604	Screw M5	
068	6028702	Gasket Ø 95x125x2	
069	6226404	Rubber gasket OR 308 Ø 60,3	
070	6226251	Flanged elbow Ø 95 mm	
071	6230711	Flue duct extension	
072	6230400	Rubber sealing ring Ø 100 mm	
073	6230302	Flue terminal	
080	6319682	D.H.W. Technyl manifold group	
081	6319681	C.H. Technyl manifold group	
085	6104714	Brass M.F. bushing 3/4"x3/4"	
700	5199501	Complete control panel	MET
701	6127214	Main cable L=1500	
703	6316252	6 pole connec.CN6 pump+g.v.+fan	
704	6316253	9 pole Stocko connector	
705	6316277	14 pole cable connector CN4	
706	6316278	5 pole cable connector CN7	
713	6319699	Split pin kit hydraulic group B	
714	6319698	O-ring kit for hydraulic group	
716	6281534	Gaskets kit	
717	5144718	L.P.G. conversion kit	
718	6319695	Murelle-Format-.....o-ring kit	
719	5198691	Technyl hydraulic group	
720	8076110	Expas.major vassel ZILMET	
721	6226638	Divertor valve motor spring cli	