



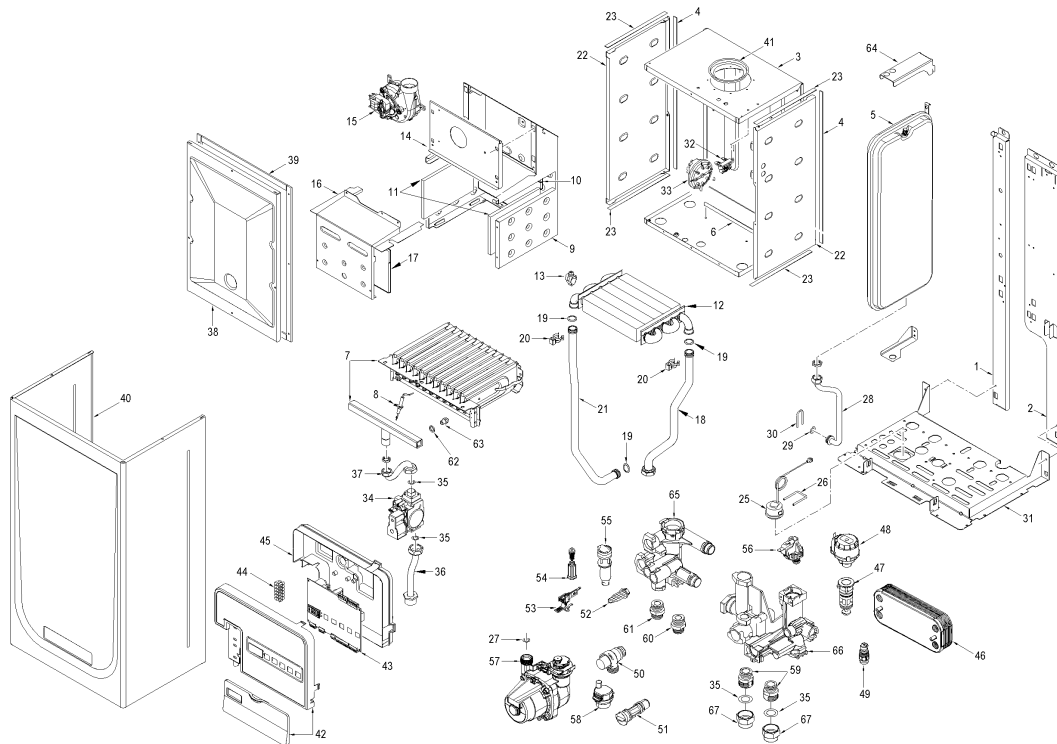
Fonderie Sime S.p.A. - Via Garbo, 27 - 37045 Legnago (VR) - [www.sime.it](http://www.sime.it)  
 Tribunale Verona 13531 - R.E.A. VR 171357 - C.C.P. 19423375 - N° Mecc. VR 014435  
 Capitale Sociale Euro 5.521.200 int. versato - Codice Fiscale/Partita IVA n. IT 01275930236

Comfort Ambiente - Via Garbo, 27 - 37045 Legnago (VR)

Tel +39 0442 631111 - Fax Servizio Commerciale: Italia +39 0442 631291 - Estero +39 0442 631293

Fax Servizio Tecnico +39 0442 631292 - Fax Ufficio Acquisti +39 0442 631292 - Fax Amministrazione +39 0442 631336

8109202 CALD.MET. FORMAT DGT 30 BF



Posiz.	Codice	Descrizione	
001	6318350	Left hand side frame part	
002	6318300	Right hand side frame part	
003A	6317610	Sealed chamber rear panel	
004	6229838	Gasket for sealed chamber	
005	5183724	Rectang. expansion vessel 8 l.	
005A	5183726	Rectang. expansion vessel 8 l.	DA MATR. 4044300267
006A	6257532	Air deflector	
007B	5198260	Main burner assembly	
008	6235932	Ignition-ionisation electrode	
009A	6318530	Smoke chamber assembly	
010A	6318741	Combustion chamber rear insulat	
011	6318710	Combustion chamber side insulat	
012A	6174265	Gas/Water heat exchanger	
013	6231362	NTC sensor	
014A	6318610	Smoke chamber front panel	
015	6225636	Fan	
016A	6317910	Combustion chamber front panel	
017A	6318731	Combustion chamber side insulat	
018A	6264846	C.H. return pipe	
019	6226412	O-ring 3068	
020	6226601	Spring for heat exchanger conne	
021A	6264780	C.H. flow pipe	
022	6288210	Sealed chamber side panel	
023	6229837	Gasket for sealed chamber	
025	6146111	Hydrometer	
026	6226628	Hydrometer Fixing spring	
027	6226457	O-ring 12bis diam. 16x1,90	
028	6017311	Flexible pipe L=250	
028B	6227694	Pipe connecting expans. vessel	DA MATR. 4044300267
029	6226464	O-ring 115 diam. 11,91x2,62	
030	6226627	Expansion vassel fixing spring	
031A	6318010	Frame assembly lower side	
032	6229110	Smoke pressure switch bracket	
033A	6225707	Air pressure switch	

034	6243833	Gas valve	
035	2030228	Gasket Ø 17x24x2	
036	6226884	Gas inlet pipe	
037	6226958	Pipe conn. gas valve to burner	
038A	6317710	Sealed chamber front panel	
039	5192208	Gasket for sealed chamber	
040A	6317851	Casing	
041A	6028620	Air diaphragm Ø 81	
042	6304791	Panel kit	
043	6301440	Main PCB	
044	2211010	Terminal strip	
045	6305050	Control panel cover	
046	6319690	kit 14 plate heat exchanger + o	
047	6319625	Divertor valve body	
048	6319620	Divertor valve motor	
049	6319603	Discharger cock	
050	6040211	Pressure relief valve 3 bar	
051	6319640	By-pass	
051A	6319641	By-pass 2 (new)	DA MATR. 4044300267
052	6319618	Primary filter component	
053	6319601	Sensor hall complete	
054	6319634	Filling cock	
055	6319633	Flowmeter without reg. of capac	
056	6037509	Water pressure switch	
057	6272310	Circulating pump	
058	6013182	Automatic air vent	
059	6120533	C.H Nipple	
060	6120532	D.H.W. Nipple	
061	6120534	D.H.W. Nipple exit	
062	6022004	Copper washer Ø 6	
063	6154402	Main burner nozzle NP 130 natur	MET
063B	6154414	Main burner nozzle NP 78 GLP	GPL
064	6267112	D.H.W. expans. vessel locking b	FINO MATR.4044300266
065	6319682	D.H.W. Technyl manifold group	
066	6319681	C.H. Technyl manifold group	
701	6127214	Main cable L=1500	
703	6316252	6 pole connec.CN6 pump+g.v.+fan	
704	6316253	9 pole Stocko connector	
705	6316277	14 pole cable connector CN4	
706	6316278	5 pole cable connector CN7	
708	6319699	Split pin kit hydraulic group B	
709	6319698	O-ring kit for hydraulic group	
711	6281534	Gaskets kit	
714	5144713	Conversion kit to LPG	
717	5199501	Complete control panel	
719	5198691	Technyl hydraulic group	
720	6319695	Murelle-Format-.....o-ring kit	
721	8076110	Expas.major vassel ZILMET	FINO MATR.4044300266
722	6211792	Hydraul. group Bitron caps kit	
729	6226638	Divertor valve motor spring cli	