



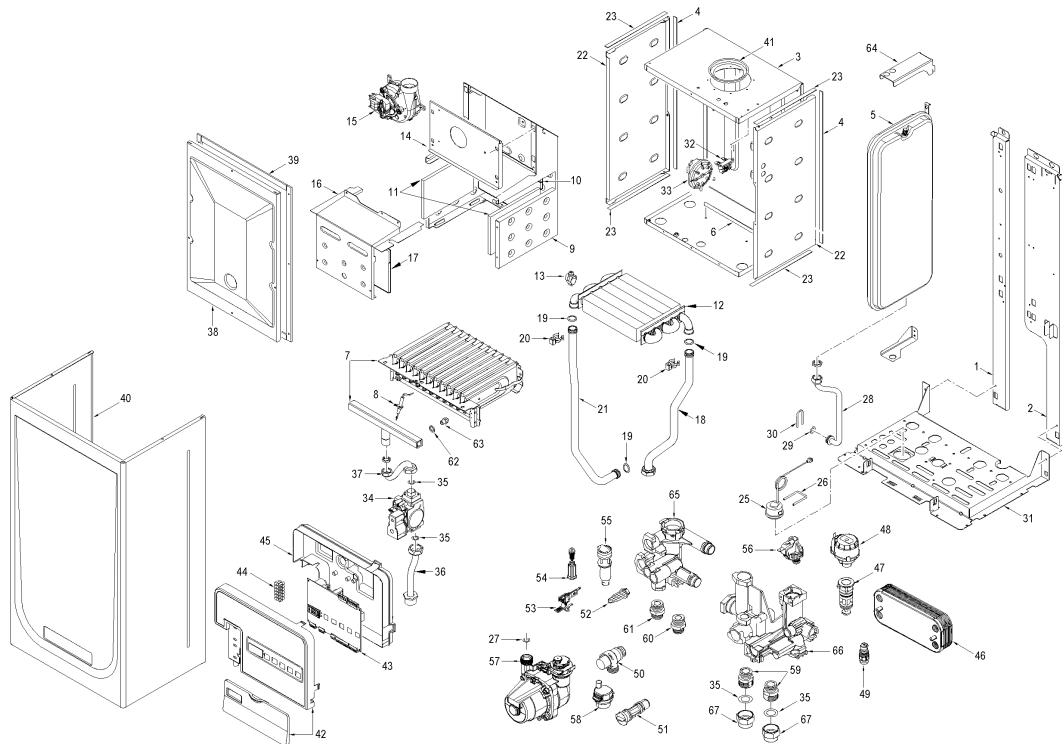
Fonderie Sime S.p.A. - Via Garbo, 27 - 37045 Legnago (VR) - www.sime.it
 Tribunale Verona 13531 - R.E.A. VR 171357 - C.C.P. 19423375 - N° Mecc. VR 014435
 Capitale Sociale Euro 5.521.200 int. versato - Codice Fiscale/Partita IVA n. IT 01275930236

Comfort Ambiente - Via Garbo, 27 - 37045 Legnago (VR)

Tel +39 0442 631111 - Fax Servizio Commerciale: Italia +39 0442 631291 - Estero +39 0442 631293

Fax Servizio Tecnico +39 0442 631292 - Fax Ufficio Acquisti +39 0442 631292 - Fax Amministrazione +39 0442 631336

8109200 CALD.MET. FORMAT DGT 25 BF



Posiz.	Codice	Descrizione
001	6318350	Left hand side frame part
002	6318300	Right hand side frame part
003	6317600	Sealed chamber rear panel
004	6229838	Gasket for sealed chamber
005	5183724	Rectang. expansion vessel 8 l.
005A	5183726	Rectang. expansion vessel 8 l. DA MATR. 4044300267
006	6257531	Air deflector
007	5198210	Main burner assembly
008	6235932	Ignition-ionisation electrode
009	6318520	Smoke chamber assembly
010	6318740	Combustion chamber rear insulat
011	6318710	Combustion chamber side insulat
012B	6174275	Gas/Water heat exchanger
013	6231362	NTC sensor
014	6318600	Sealed chamber front panel
015	6225636	Fan
016	6317900	Combustion chamber front panel
017	6318730	Combustion chamber side insulat
018	6264845	C.H. return pipe
019	6226412	O-ring 3068
020	6226601	Spring for heat exchanger conne
021	6264779	C.H. flow pipe
022	6288210	Sealed chamber side panel
023	6229837	Gasket for sealed chamber
025	6146111	Hydrometer
026	6226628	Hydrometer Fixing spring
027	6226457	O-ring 12bis diam. 16x1,90
028	6017311	Flexible pipe L=250
028A	6227692	Pipe connecting expans. vessel DA MATR. 4044300267
029	6226464	O-ring 115 diam. 11,91x2,62
030	6226627	Expansion vassel fixing spring
031	6318000	Frame assembly lower side
032	6229110	Smoke pressure switch bracket
033	6225715	Air pressure switch

034	6243833	Gas valve	
035	2030228	Gasket Ø 17x24x2	
036	6226884	Gas inlet pipe	
037	6226958	Pipe conn. gas valve to burner	
038	6317700	Sealed chamber front panel	
039	5192208	Gasket for sealed chamber	
040	6317850	Casing	
041	6028621	Air diaphragm Ø 79	
042	6304791	Panel kit	
043	6301440	Main PCB	
044	2211010	Terminal strip	
045	6305050	Control panel cover	
046	6319690	kit 14 plate heat exchanger + o	
047	6319625	Divertor valve body	
048	6319620	Divertor valve motor	
049	6319603	Discharger cock	
050	6040211	Pressure relief valve 3 bar	
051	6319640	By-pass	
051A	6319641	By-pass 2 (new)	DA MATR. 4044300267
052	6319618	Primary filter component	
053	6319601	Sensor hall complete	
054	6319634	Filling cock	
055	6319633	Flowmeter without reg. of capac	
056	6037509	Water pressure switch	
057	6272310	Circulating pump	
058	6013182	Automatic air vent	
059	6120533	C.H Nipple	
060	6120532	D.H.W. Nipple	
061	6120534	D.H.W. Nipple exit	
062	6022004	Copper washer Ø 6	
063	6154402	Main burner nozzle NP 130 natur	MET
063A	6154406	Main burner nozzle NP 0,80	GPL
064	6267112	D.H.W. expans. vessel locking b	FINO MATR.4044300266
065	6319682	D.H.W. Technyl manifold group	
066	6319681	C.H. Technyl manifold group	
701	6127214	Main cable L=1500	
703	6316252	6 pole connec.CN6 pump+g.v.+fan	
704	6316253	9 pole Stocko connector	
705	6316277	14 pole cable connector CN4	
706	6316278	5 pole cable connector CN7	
708	6319699	Split pin kit hydraulic group B	
709	6319698	O-ring kit for hydraulic group	
711	6281534	Gaskets kit	
712	5144716	Conversion kit to LPG	
719	5198691	Technyl hydraulic group	
720	6319695	Murelle-Format-.....o-ring kit	
721	8076110	Expas.major vassel ZILMET	FINO MATR.4044300266
722	6211792	Hydraul. group Bitron caps kit	
728	5199500	Complete control panel	
729	6226638	Divertor valve motor spring cli	